

GW304-AT Anti-Turn Head Threaded Insert

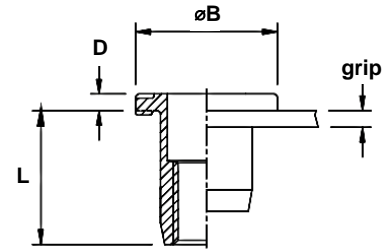
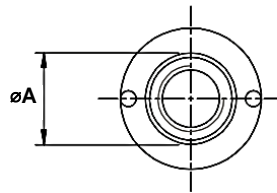
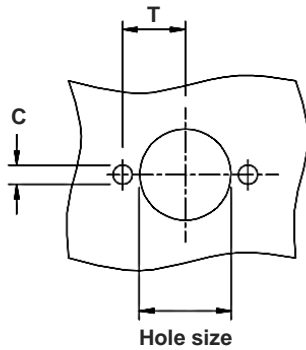
Stainless steel 304 · Large flange · Open end · Anti-turn head
M6 - M10

Features

- Special anti-rotation head and round shank to reach a torque-to-turn value at least twice as high as that of the equivalent round blind rivet nut
- Suitable for all applications, in particular for applications where hexagonal holes are not allowed or difficult to make

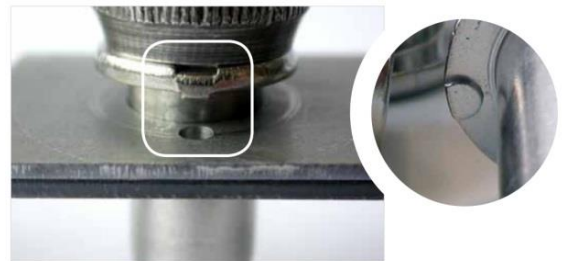
Material

- Stainless steel 304



Part No.	Thread Size	Grip Range		Hole Size	øA	øB	D	L	C	T
		min.	max.							
GW304-ATM6-0530	M6	0.5	3.0	9.0	9.0	14.0	1.5	14.5	1.8	6.25
GW304-ATM8-0530	M8	0.5	3.0	11.0	11.0	17.0	2.0	16.0	2.3	7.50
GW304-ATM8-3055		3.0	5.5					18.5		
GW304-ATM10-0835	M10	0.8	3.5	13.0	13.0	19.0	2.0	21.0	3.0	8.75

Tool to position øA:	
M6	GAT-206
M8	GAT-208
M10	GAT-210



Can't find what you are looking for?

We can provide unique and customized solutions.
Contact your nearest [Gripwell](#) team for assistance!